



# Bladder Scanners

## Scanning Tips and Tricks



1. **Apply ample ultrasound gel to probe**  
Insufficient gel can cause limited visibility and inaccurate scans.

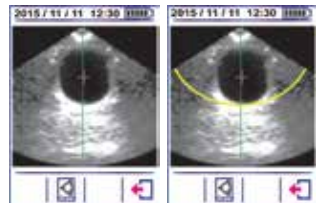
2. **Aim toward the rectum**  
Put the probe on the patient's abdomen, approximately 1-2" above the pubic bone. Aiming at a downward angle towards the rectum will help locate the bladder. Apply sufficient pressure, moreso for high BMI patients.



**Important:** Make sure the head of the figure on the probe is pointing towards the head of the patient.

3. **Locate the bladder by pre-scan function**  
Press the Scan button to start to Pre-Scan the live bladder image. Find and center the bladder.

3. **Important:** Bladderpoint (+) helps a user locate fluid in the bladder. Bladderpoint may flicker or not be present if there is little to no fluid in the bladder or the probe is positioned too high.



4. **Scan result screen**  
When the centered bladder image or Bladderpoint target looks the biggest on the screen, press the Scan button again. If the bladder image or Bladderpoint are not visible due to low volume proceed with scan. The post scan screen will show fluid ml and accuracy.

